

THE GREAT WALL

OF
LIBERTY CITY

INTRODUCTION ,

This is the longest highway in Liberty City

It is also the largest project in the Liberty City

This is the longest bridge in the liberty city, deemed it "The Great Wall of Liberty City".

In the few months before the project reaches 3 and a half months.

This appearance is shaped like an potato with its size 30.2 kilometer long, From the airport to the intersection of Shinnecock Ave size 5 kilometers.

Here the left is split with a choice of three roads, on the left perimeter bound for Shinnecock Ave. This to Muskteer Ave. Has size 6.78 kliometer distance beginning the airport to Muskteer Ave. that in Alderney. This Shinnecock Ave. also, beginning this airport is 5 kilometers away. You'll see how big the scope of the Great Wall it. This potato shape to the size of the Great Wall is coming from at the airport with a size 30.2 kilometers away.

When you traveling, it will take you 41 minutes before reaching the finish line, depending on your pace to reach you sooner. Example, I showed this video to you beginning I was still only 9:00 to 00:10 midnight to be there in my preview.

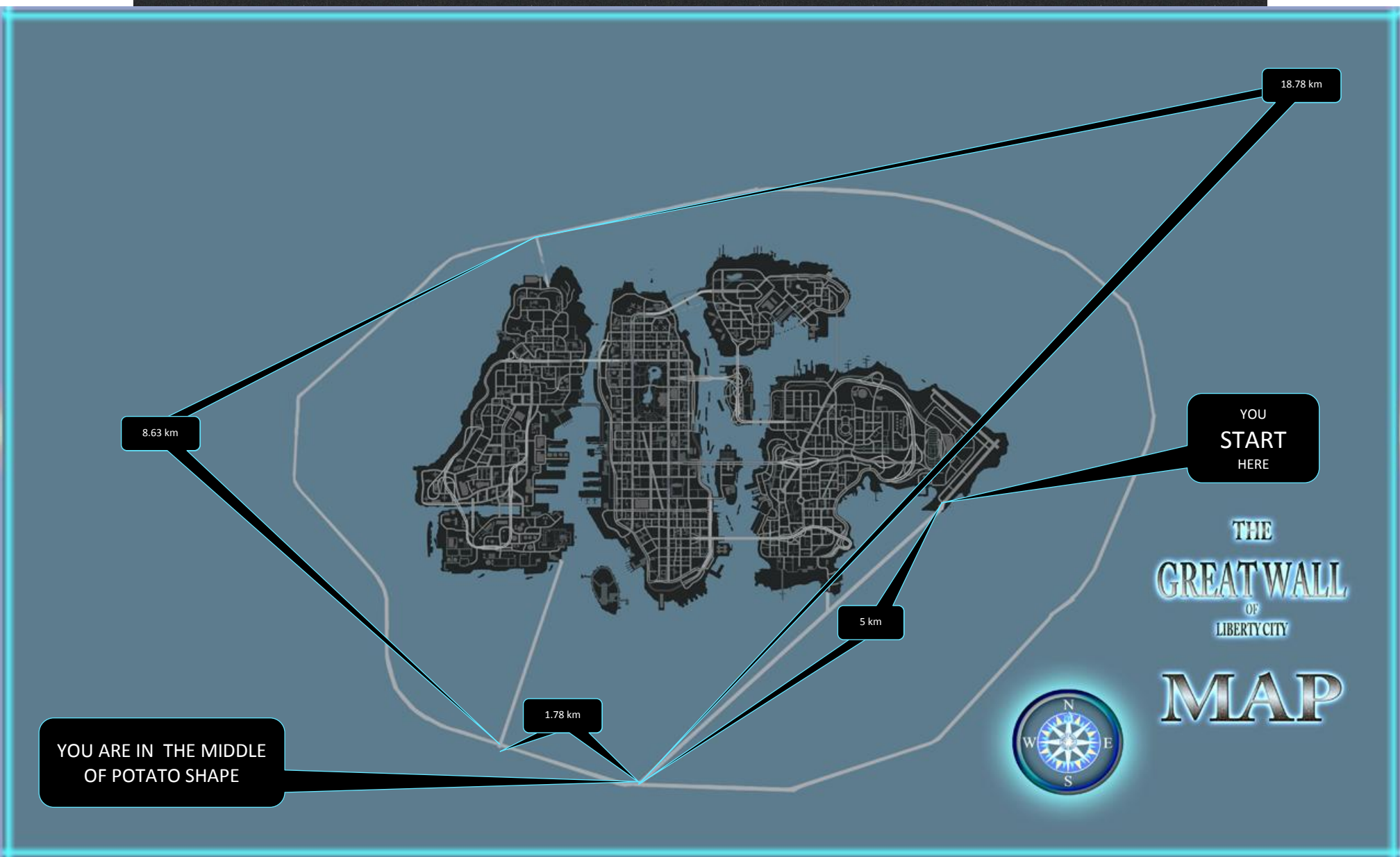
You also have to race it the only multiplayer I'll race here. You also have to chasing incident. You have to have a background picture or styles you have available. For example, you have a new car mode, or turn to commercial vehicle you want, there you can see the sensible effort.

WARNING:

Playing the high memory of the computer you can not bear can also live together, malfunction or error in In-game, for example you loaded all the objects in the In-game does not error when he may be of high memory because when you go there on Shinnecock Ave. or anywhere portion of Liberty City.

When low memory your computer turn it there are probably errors your computer.

THE
GREAT WALL
OF
LIBERTY CITY
MAP



This appearance of the Great Wall of LC in the distance when the object loads of 3, 4 and 5. This is indeed earlier as I mentioned at page 2 is shaped like an potato appearance at this map. That size of Great Wall of LC built on 30.2 kilometer circle.

MANUAL

- a.) Extract the files inside the “The Great Wall of L.C” Winrar first Through dekstop.
- b.) Go to directory file “Your game C:\Program Files\Rockstar Games\Grand Theft Auto IV”.
- c.) Then, copy from The Great Wall of L.C files and paste to Directory file
- d.) Then refresh and close it.
- e.) You need to SparkIV here.
- f.) ...And the Great Wall’s texture, go to C:\Program Files\Rockstar Games\Grand Theft Auto IV\pc\data\maps\jersey
- g.) Then select the nj_xref.img
- h.) **“YOU NEED TO BACKUP FILES FIRST”**, click import button and select the nj_pipes.wtd.
- i.) Then click save and close the SparkIV
- j.) Enjoy your ride!

THE VEHICLES AND GRAPHICS IN THE VIDEO USED TO TRAVELING FOR THE GREAT WALL OF LIBERTY CITY



I made new settings ENB 0.079, 0.081 and graphics used to travel in The Great Wall of Liberty City. Download here: <http://www.megaupload.com/?d=WNR8WAC4>

The second batch I have been used car
Lamborghini Reventon ó nRoadster [EPM]
made by **smokey8808 & Threepwood** or
otherwise download here.

<http://www.gtainside.com/en/download.php?do=comments&cat=380&start=14&id=32020&orderBy=>



The third batch I have been used car modeled after the
2010 Ford Edge

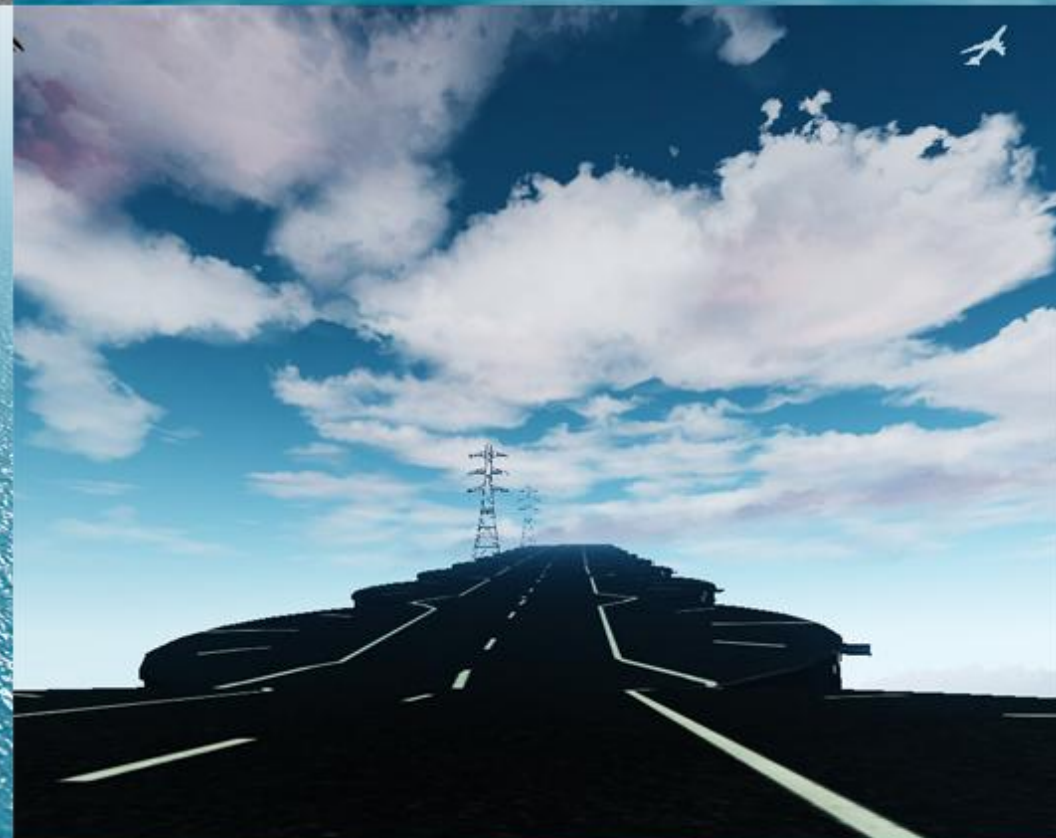
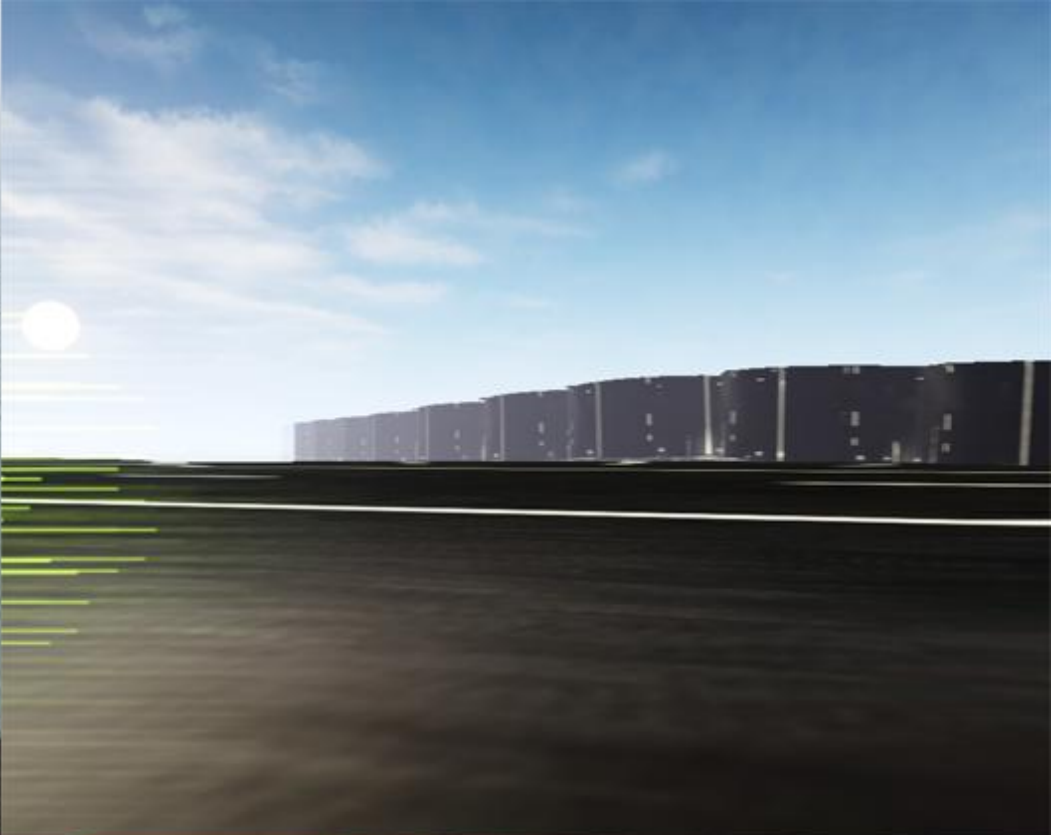
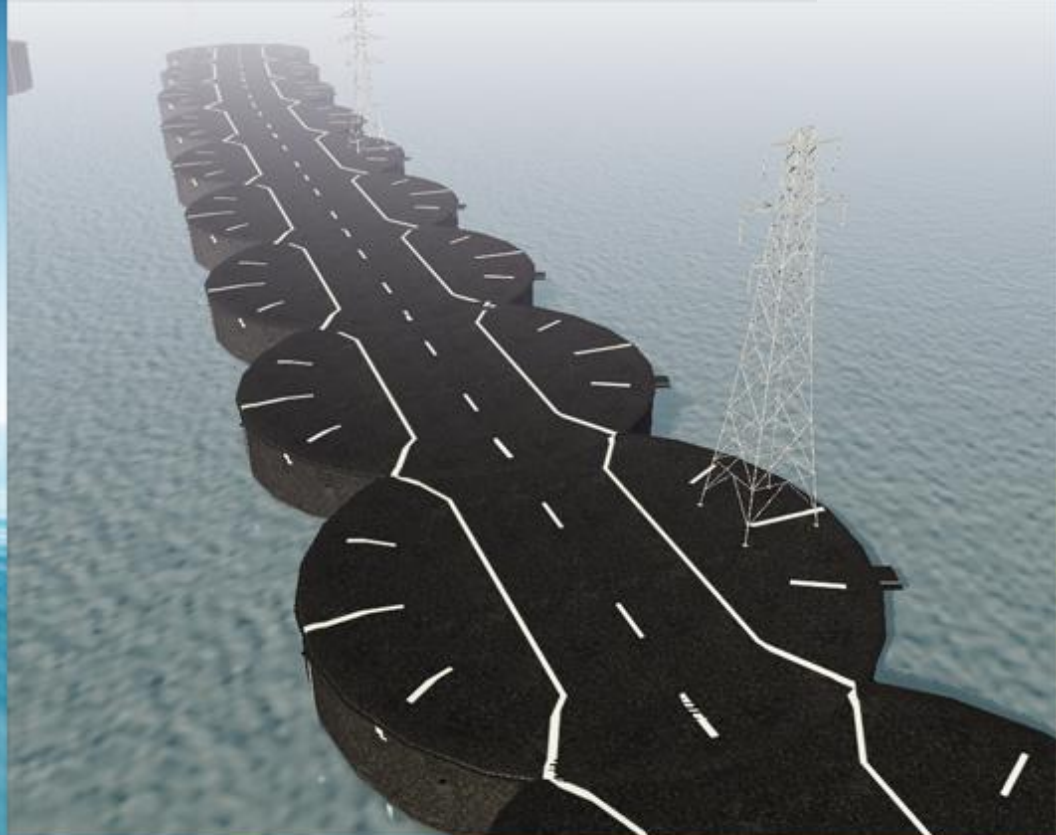
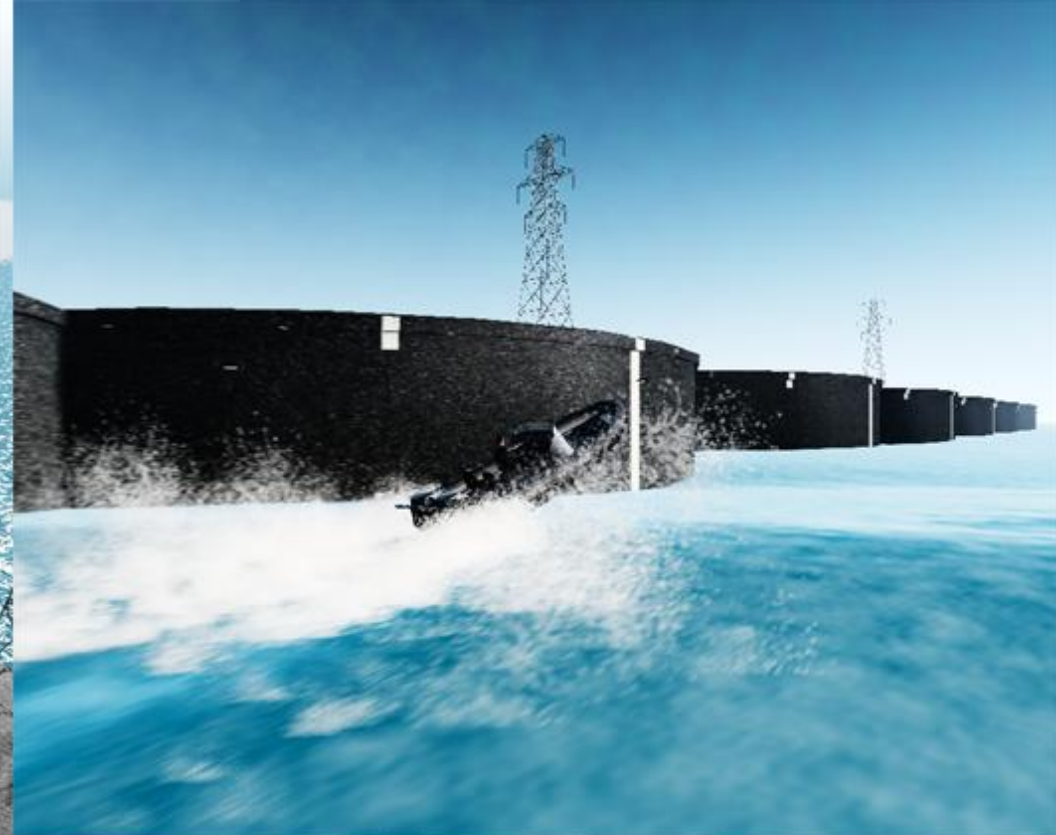
By **André - IIinfinitiIPC2** or I downloaded it immediately.
<http://www.gtagaming.com/downloads/gta-iv/vehicle-mods/6194>

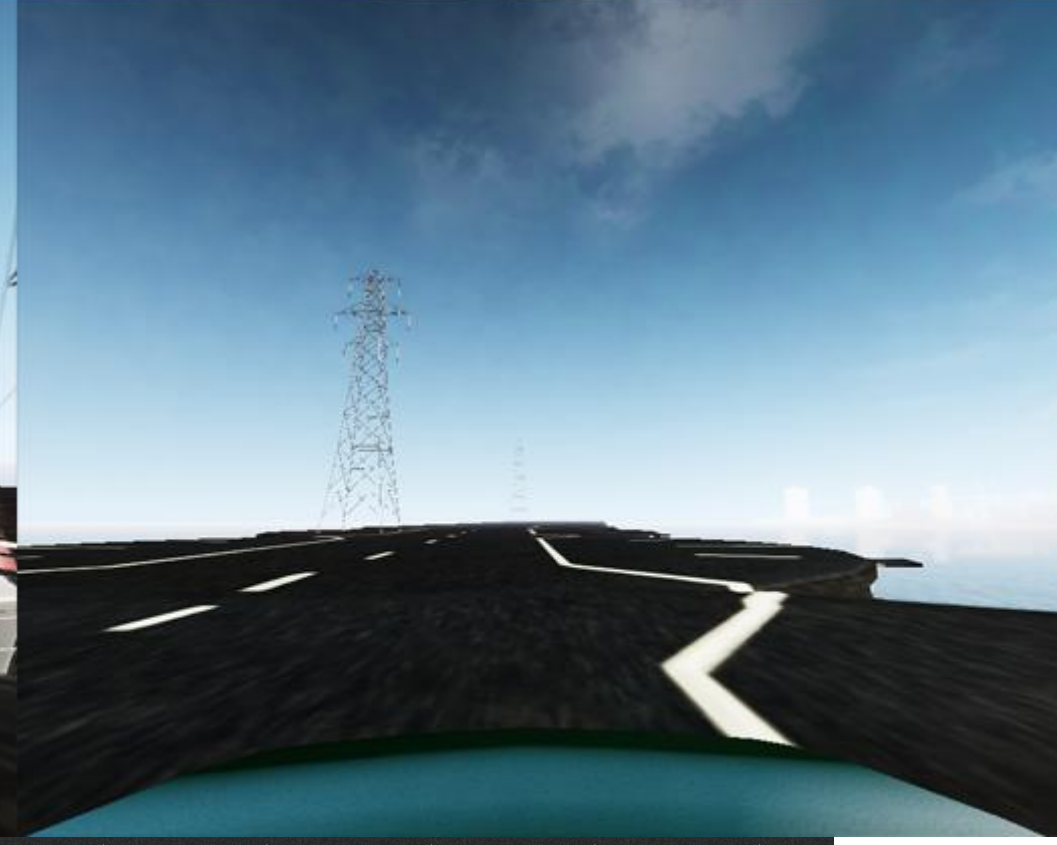
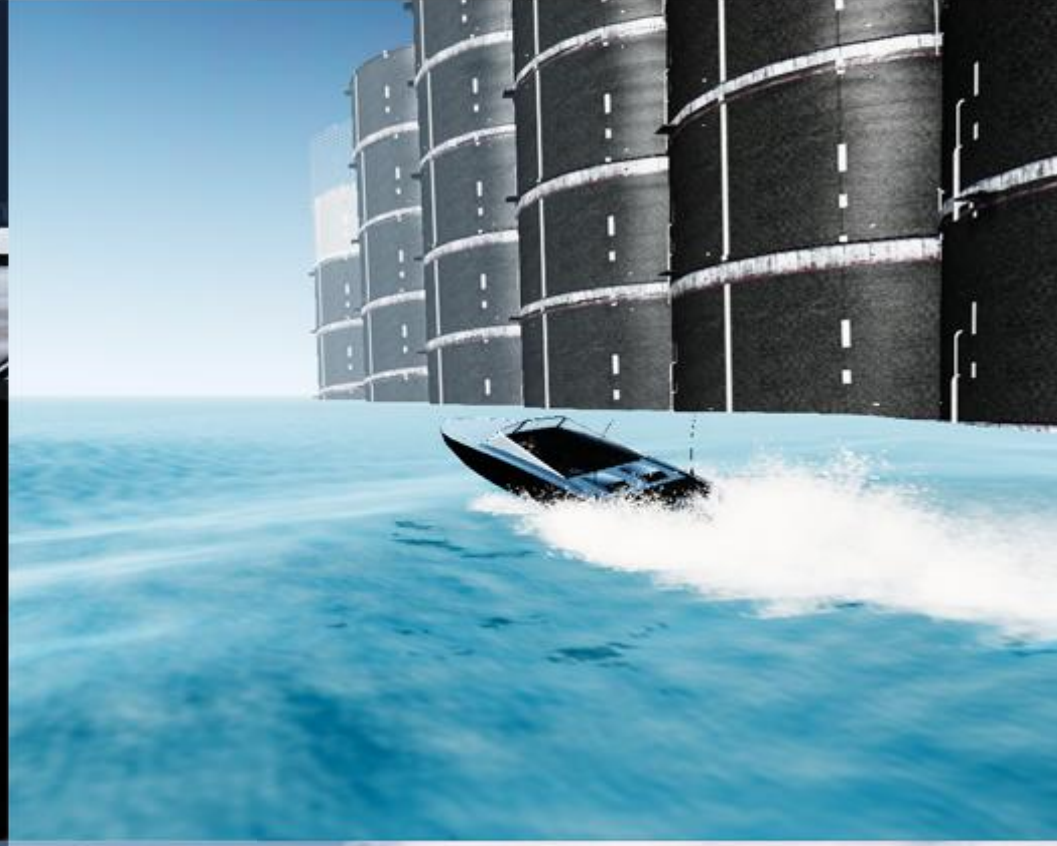


The first batch I have been used car modeled after the
Shelby GT500 Eleanor by **pecet93**
or I downloaded it immediately.
<http://www.gta4-mods.com/vehicles/shelby-gt500-eleanor-f5796>

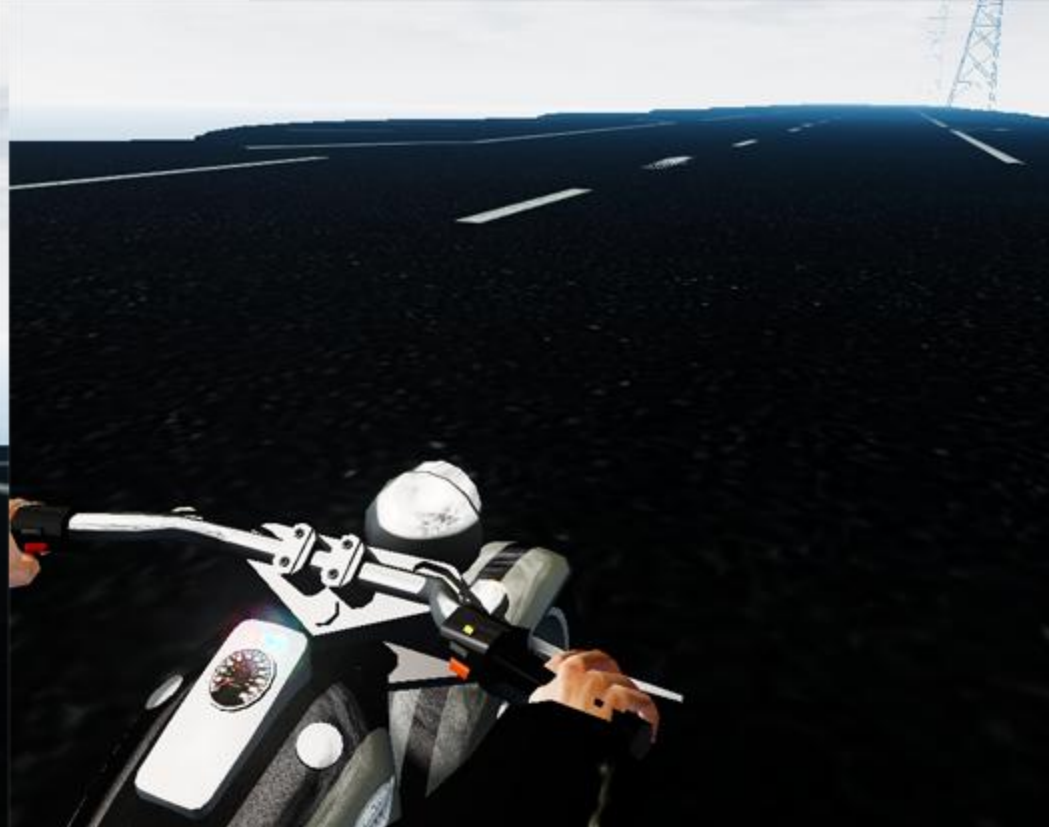


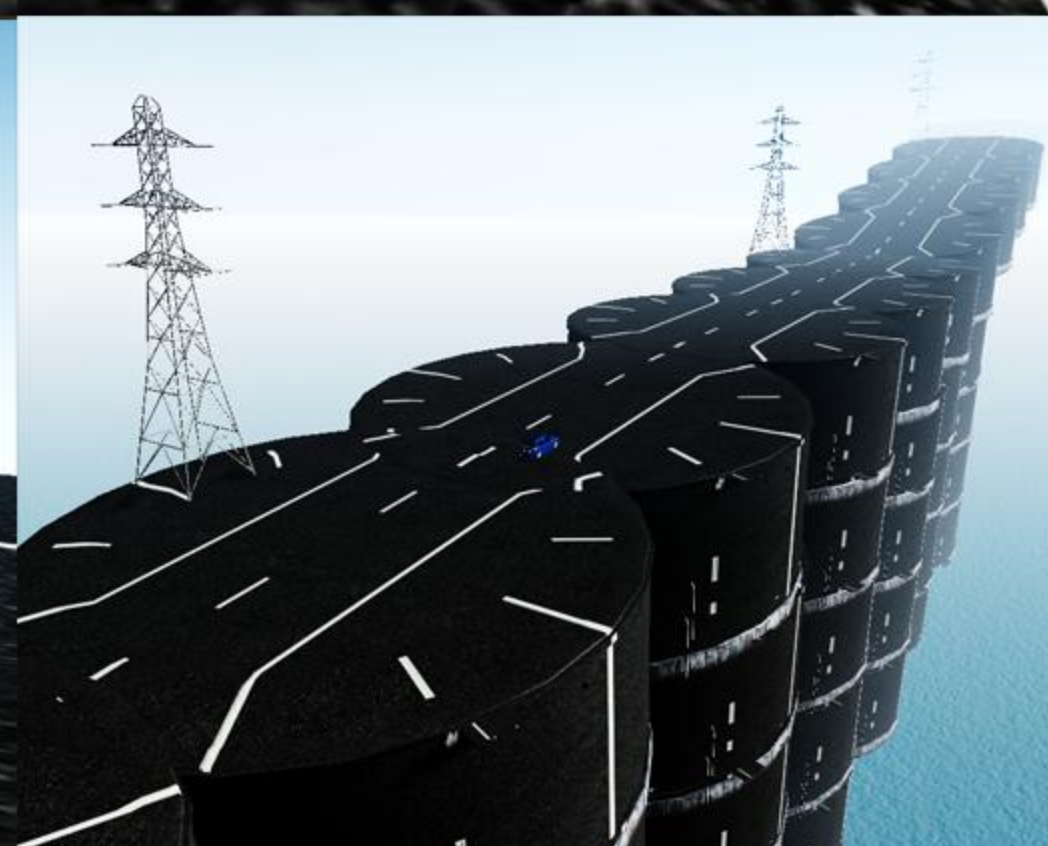
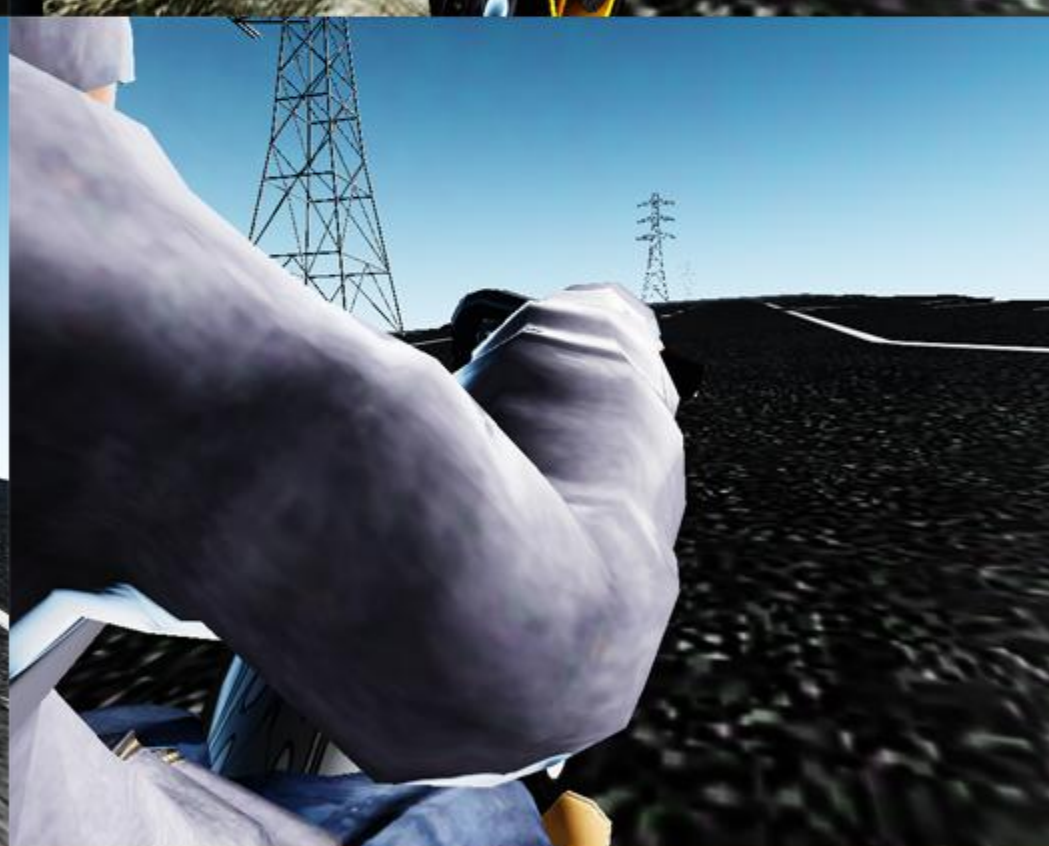
THE SENSIBLE EFFORTS AND SCREENSHOTS

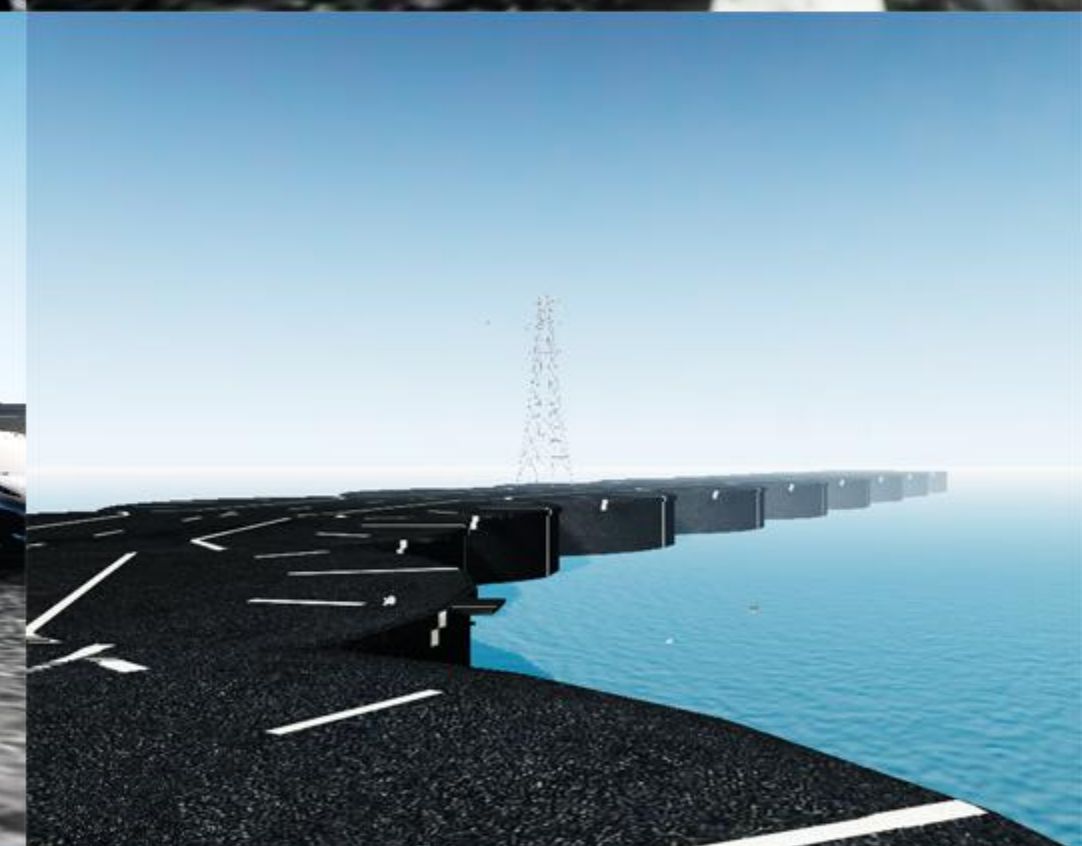


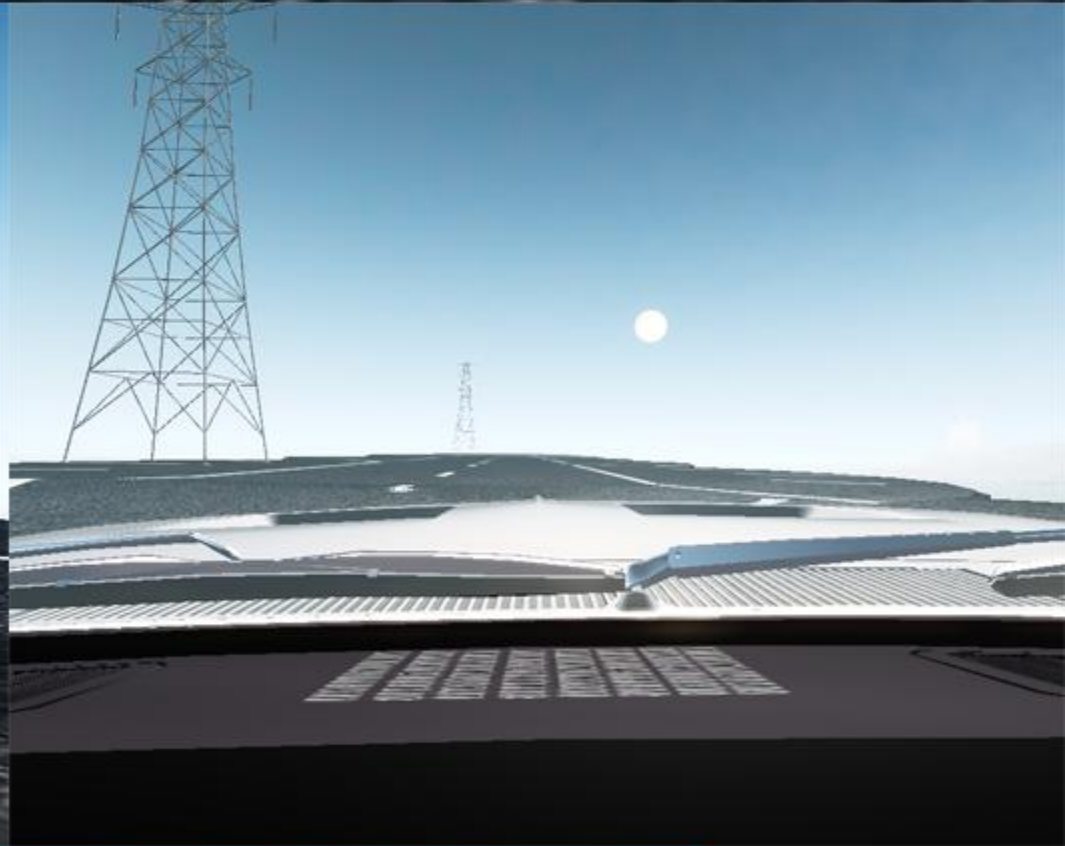
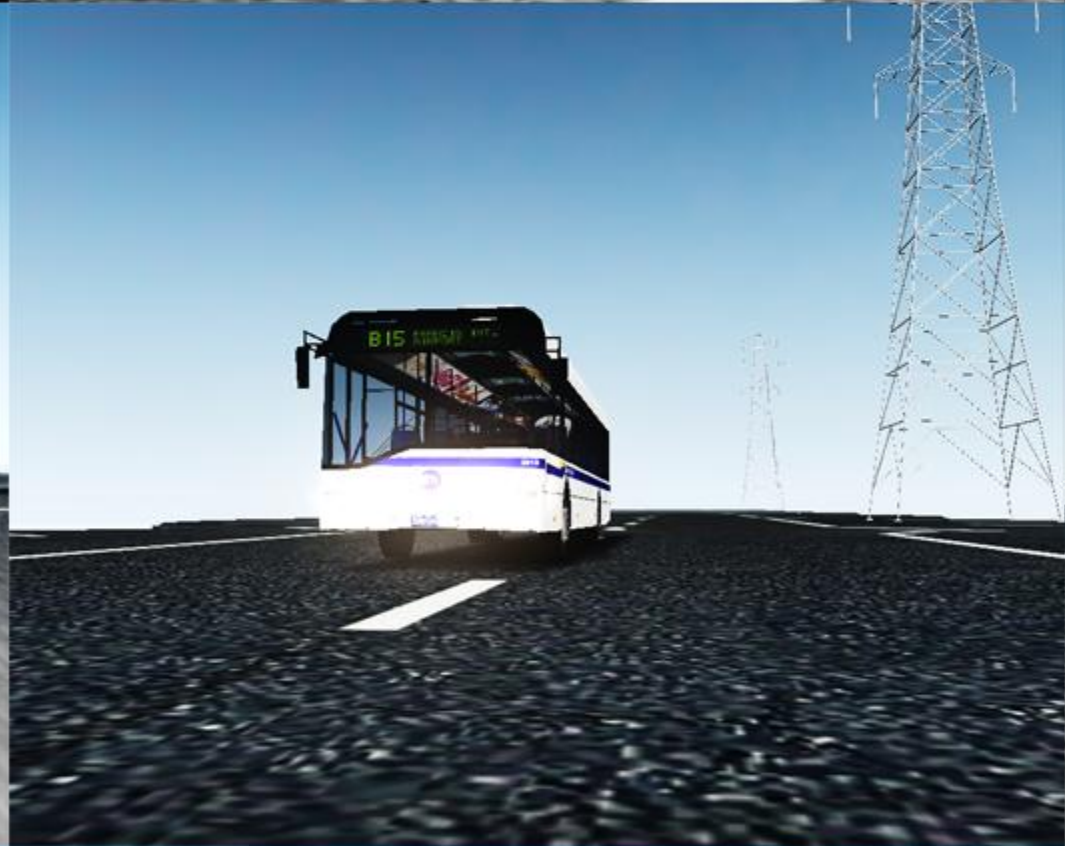
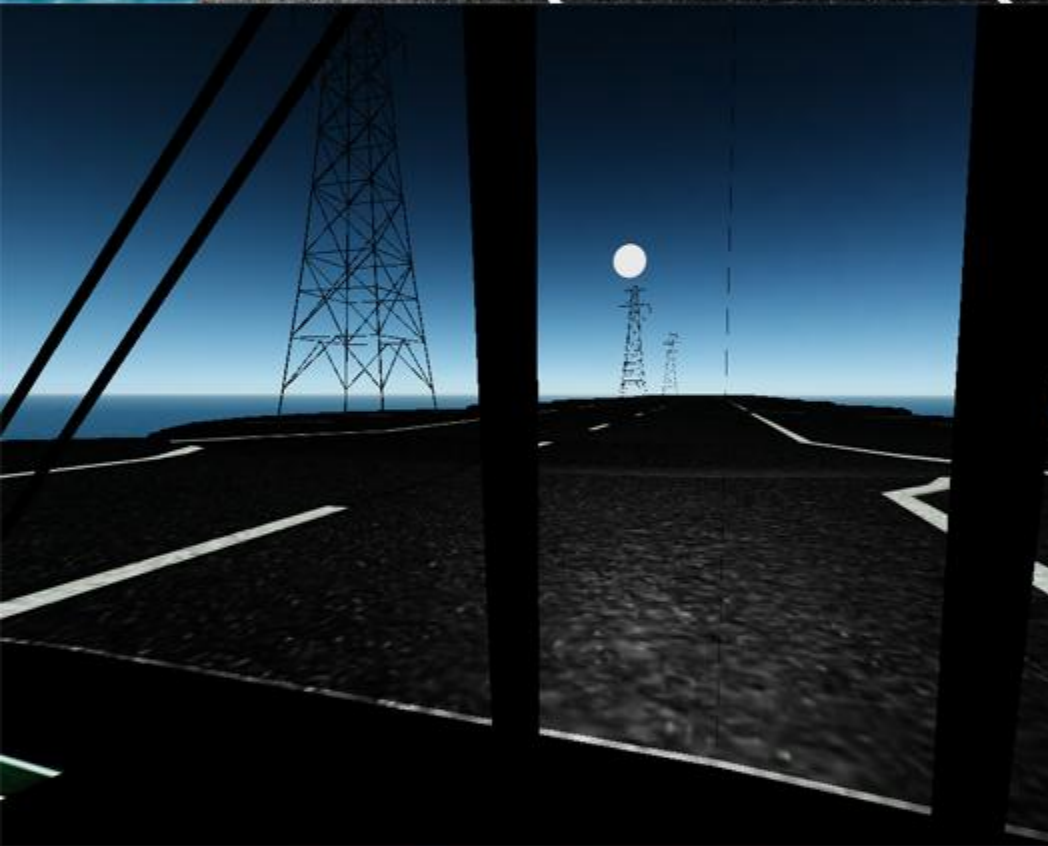
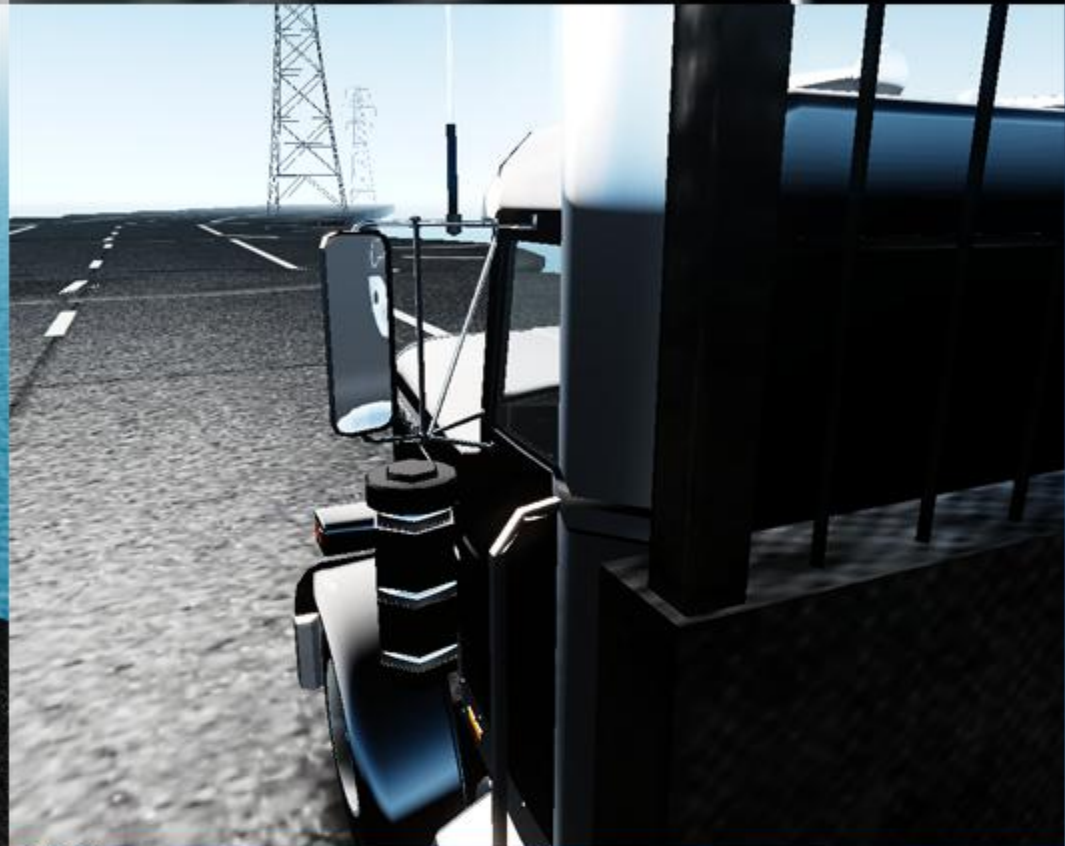


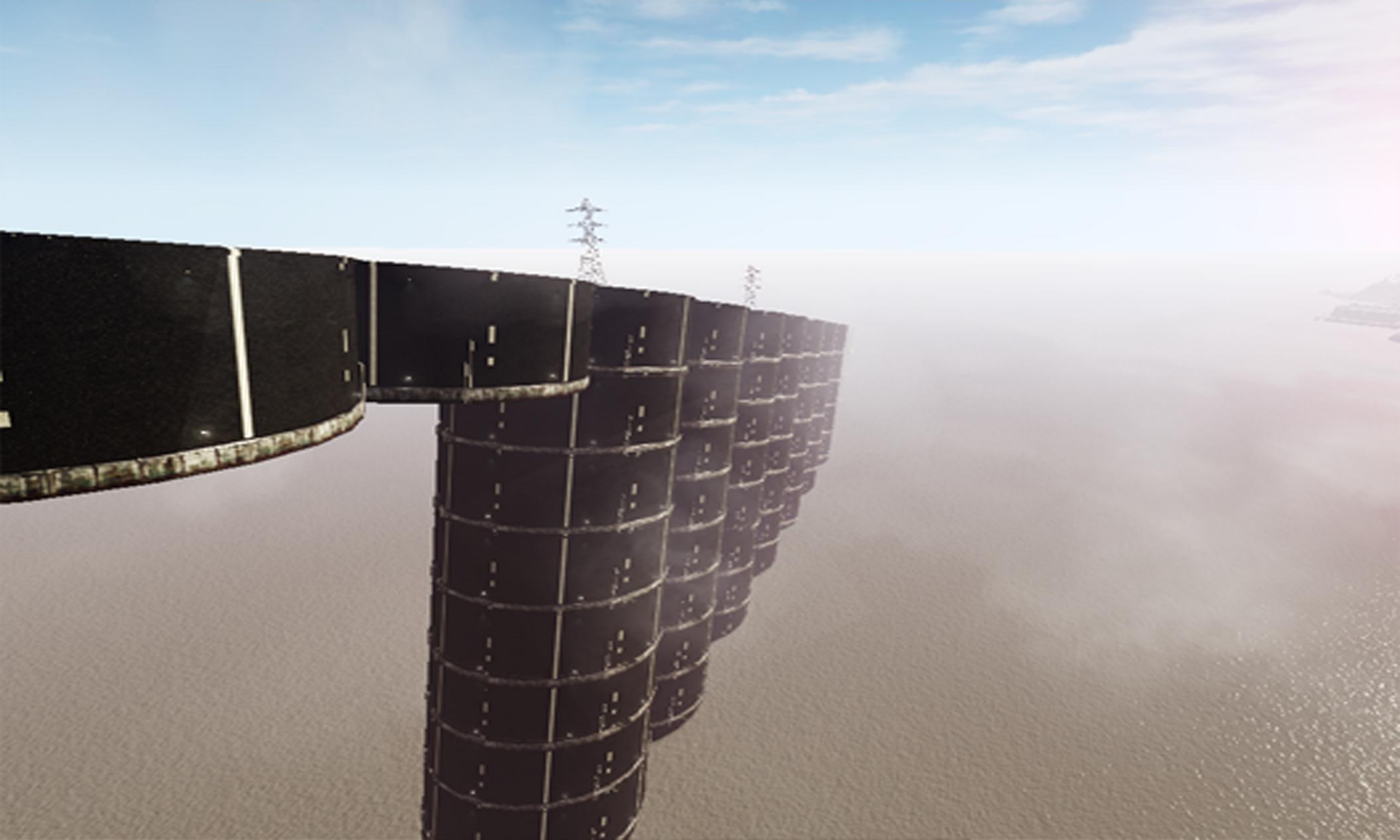
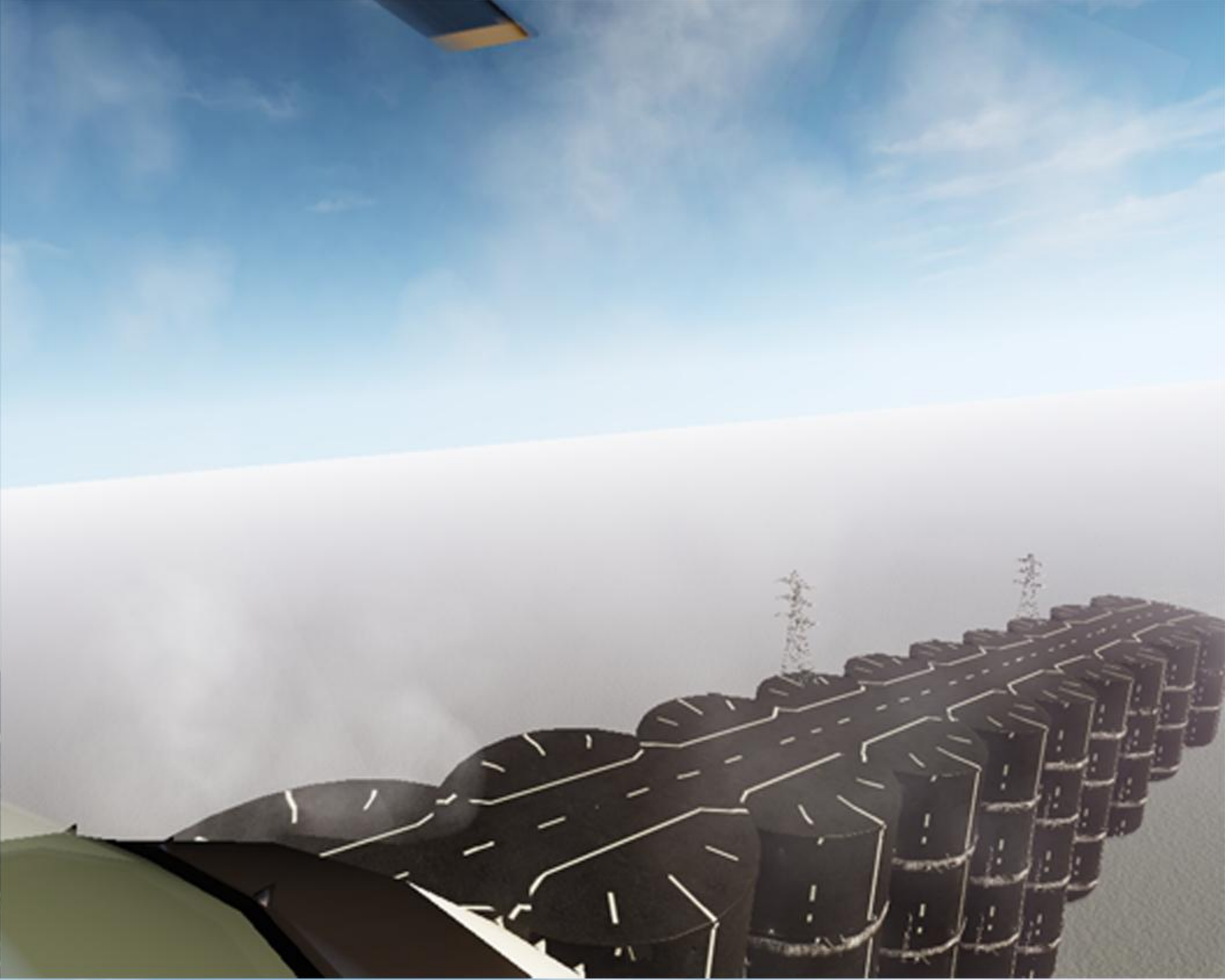














THE END

TAKE

YOUR

OWN

WAY